

UNDP Study on Access to Clean Water and the Business and Human Rights Agenda and Introduction to HREDD toolkit: A Clean Water Self-Assessment

Mohamad Mova AlAfghani, PhD

SE24: Access to Clean Water and the Business and Human Rights in Asia. 10th World Water Forum, Bali, Nusa Dua, May 23rd, 2024



European Union

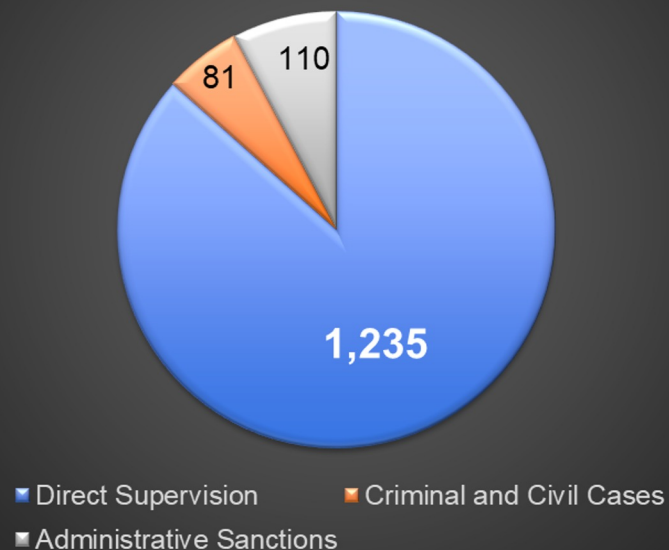


SEKTOR 21 COR SALURAN PEMBUANGAN LIMBAH DI CIMAHI



CIMAHI-Sektor 21 Subsektor 13 Cimahi selatan menindakkanjuti perintah Dansektor 21 tentang pelanggaran membuang limbah PT. RAS Jaya di Jalan Raya Maharmartanegara Kelurahan Cigugur tengah Kecamatan Cimahi Tengah, Kota Cimahi, Selasa (7/9/2021) malam.

Enforcement by Satgas, 2021



■ Direct Supervision

■ Criminal and Civil Cases

■ Administrative Sanctions

Prajurit Ini Jadi Gatal Kulit Akut Usai Periksa Limbah di Anak Sungai Citarum

By bb1 Sabtu, April 28, 2018

bb1

Bagikan



2018



Img: Antara

2018
Oxbouw Cicukang

Efforts:

Revitalization Program
by Satgas Citarum
Harum

Satgas Citarum Harum Cor Saluran
Pembuangan Limbah 11 Perusahaan

Tim Pikiran Rakyat - 5 September 2019, 12:56 WIB



PERSONEL Satgas Citarum Harum Sektor 7 menutup saluran pembuangan limbah ke anak Sungai Cisuminta di kawasan industri di Jalan Cisarung, Dayeuhkolot, Kabupaten Bandung, Kamis 5 September 2019. Anak sungai itu bermuara ke Sungai Citarum. YADE MAMADUR

Results



Wagub Jabar Apresiasi Hadirnya Taman Icon di Sektor 8 Citarum Harum

 Dila Nashear
Oktober 9, 2022



Wakil Gubernur Jabar Apresiasi Hadirnya Taman Icon di Sektor 8 Citarum Harum



Visit to Sector 8, Kampung Mahmud and Oxbow. IMG: Yuma, S



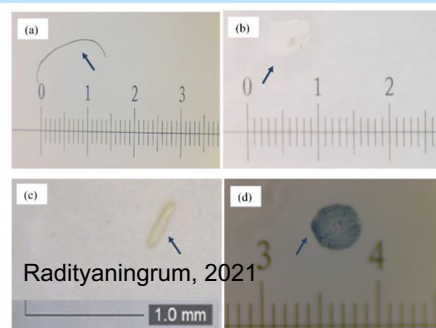
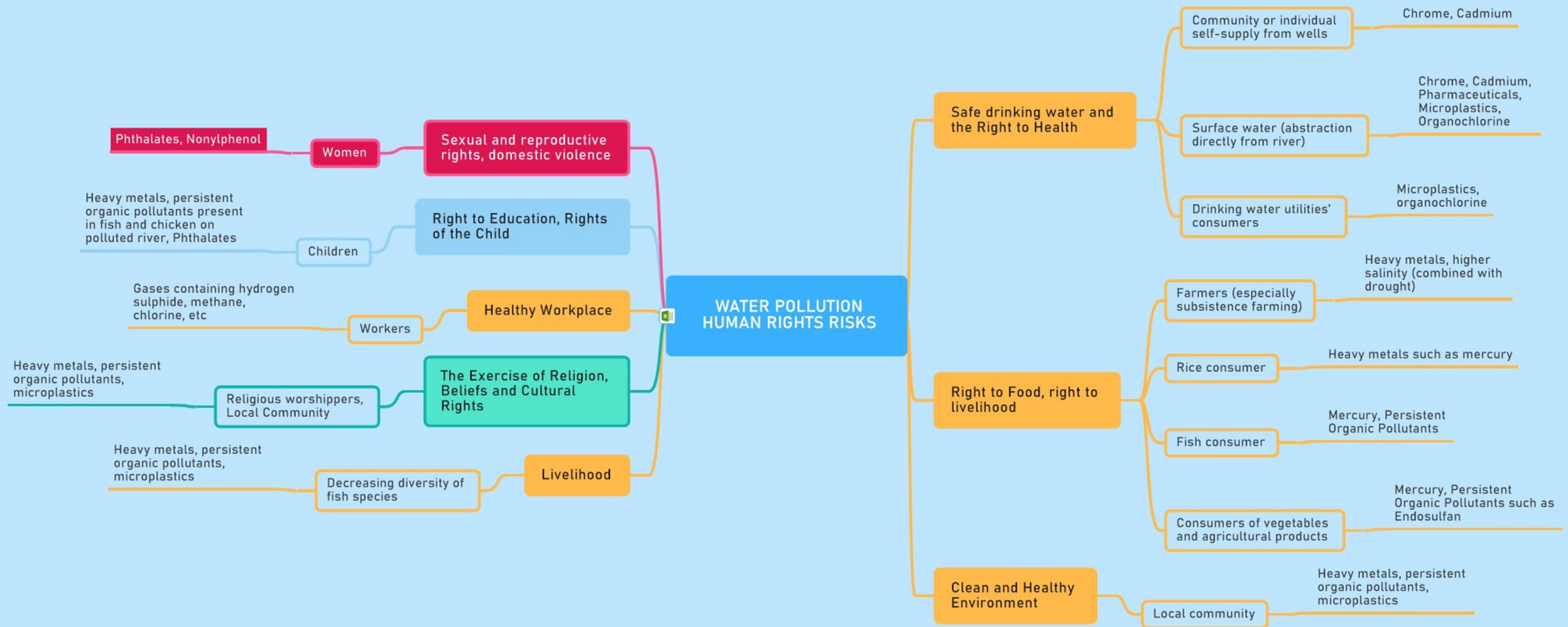


Fig. 3. Microscopic images of MP shapes: (a) Fiber; (b) Fragment; (c) Film (d) Pellet.



Exercise of Religion, Beliefs and Cultural Rights

Perlengkapan Dalam Acara 7 Bulanan



IMG: Yuma, S, 2023



Gender, Rights to Reproduction and Rights of the Child



Women in Majalaya village wash clothes in one of Citarum's tributaries
(Picture Source: Darren Whiteside/Reuters, republished by Republika)



Berita Kedokteran Masyarakat
(BKM Journal of Public Health and Community Medicine)

Volume 37 Number 12, 2021
Pages 415-422
DOI: 10.22146/bkm.v37i12.3439

Food profile, environmental factors, stunting, and risk of autism among children on Citarum watershed: a preliminary study

Shela Rachmayanti^{1*}, Asri Chasanah Adisasmita², Retno Asti Werdhani³, Wiku B. B. Adisasmito⁴

Identify and Assess



**UNDERSTAND
WATER USAGE**

**EVALUATE CHEMICAL
PROFILES**

**ASSESS WASTE
MANAGEMENT**

**ANALYZE WATER
TENURES**

Does your water use impact other stakeholders? How do you assess the volume of direct water abstraction? What methods are used, such as pumping from underground sources?"

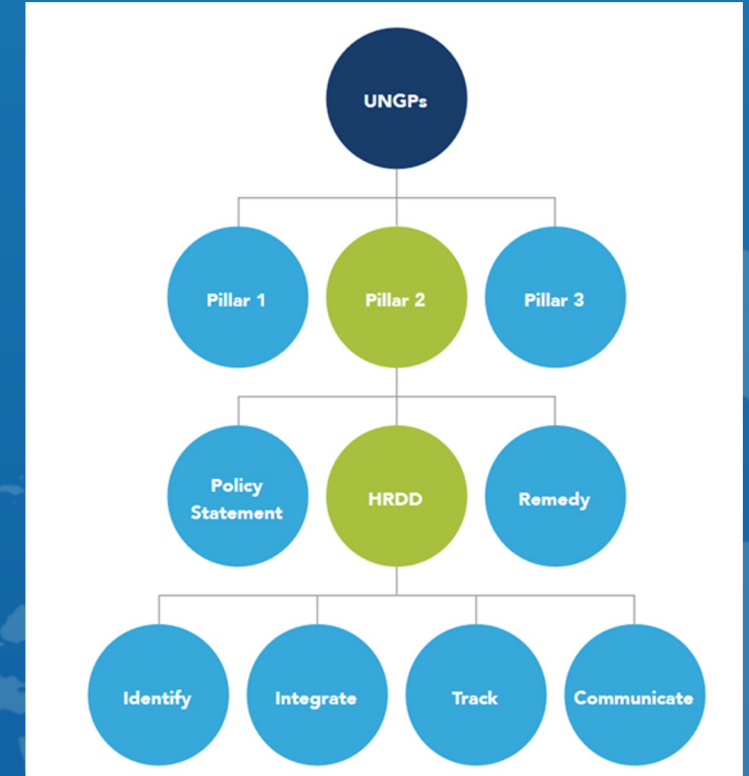
What hazardous and toxic substances are used? How are they stored and disposed of? What are the potential health and environmental risks? Are there safer alternatives available? How can we mitigate the risks associated with these chemicals?

What methods are used for solid waste disposal? Are landfills properly managed? What environmental and health risks are associated with disposal sites?

What are the legal and customary water rights in the area? How do company operations impact these rights? Have entitlements to water resources been properly mapped? Do company activities infringe on local communities' access to water? How can conflicts be mitigated?



European Union



Take Action and Monitor



INTEGRATE & TAKE ACTION

Are chemicals use restricted based on the Zero Discharge of Hazardous Chemicals (ZDHC) Manufacturing Restricted Substances List (MRSL)?

Are dangerous and hazardous chemicals (both raw materials and waste) stored in accordance with the Basel-Rotterdam-Stockholm Convention?



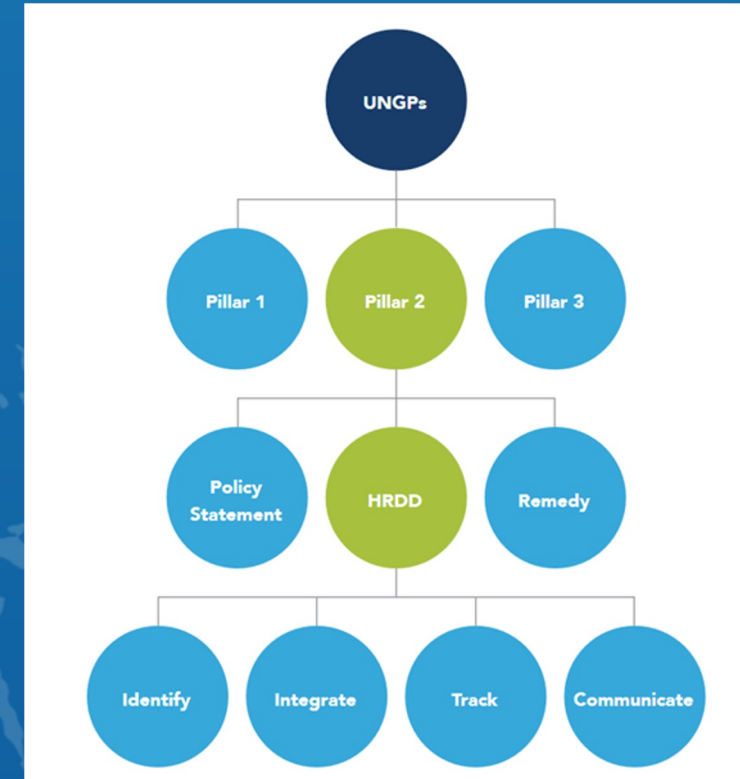
European Union



MONITOR & TRACK PERFORMANCE

Are reports on water recovery, water recycling, and water reuse developed and updated regularly?

Are hazardous chemicals monitored and tracked, with reports detailing their quantity, concentration, usage in production, and risk mitigation for human health and the environment?



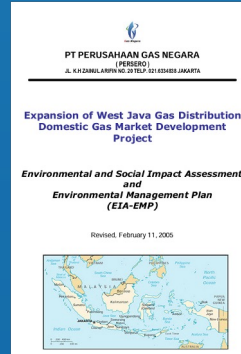
Communicate: Disclose Findings From All HREDD Steps



Your water footprint estimates (annual)



Volume of packaging, sachets and plastic bottles (annual)



Environmental Impact Assessment Documents



Sustainability and/or Environmental reports

Provide explanations for items not disclosed



European Union



Thank You!



European Union

